

**TROILUS GOLD CORP. INTERSECTS 20.85 G/T AUEQ OVER 7 METRES BELOW CURRENT MINERAL RESOURCE AT Z87**

**October 10, 2018, Toronto, Ontario** – Troilus Gold Corp. (TSX-V: TLG) (“Troilus” or the “Company”) is pleased to provide further drilling results from its 100% owned Troilus gold and copper property located Northeast of the Val-d’Or district in Quebec, Canada (the “Troilus Project”). The 36,000 metre drill program was designed to confirm and expand existing mineral resources from the historically producing Troilus mine, as well as explore down dip and along strike from known mineralization.

Twelve (12) holes, totaling approximately 9,100 metres of drilling were designed to upgrade inferred classified material to indicated, and to improve mineralized resolution below the indicated mineral resource. Additionally, management believes success from this series of drill holes may add additional inferred material below the currently classified resource limit (Fig 1, 2, 3 & 4).

**Highlights:**

- **TLG-Z87-019 – 19.99 g/t gold and 0.54% Cu for 20.85 g/t AuEq over 7m, including 70.21 g/t AuEq over 2 metres, and 8.36 g/t AuEq over 2 metres within a broader zone of 1.28 g/t AuEq over 54m**
- **TLG-Z87-014 – 1.80 g/t gold and 0.14% Cu for 2.02 g/t AuEq over 20 metres, including 2.58 g/t AuEq over 6 metres**
- **TLG-Z87-015 – 1.44 g/t gold and 0.12% Cu for 1.63 g/t AuEq over 49 metres, including 3.15 g/t AuEq over 5 metres, and 3.34 g/t AuEq over 7 metres**

“Our 2018 drill program continues to exceed our expectations,” said Justin Reid, CEO of Troilus Gold Corp. “Z87 has continued to show strong continuity of grade and width as we extend our drilling at depth; we expect these new results to improve our existing mineral estimates significantly.”

The 2018 drill program has been completed at the Troilus Project with ninety (90) diamond drill holes for a total of 36,000 metres of drilling. A large backlog in the labs has been cleared, and Troilus will continue to deliver the bulk of our Z87, J4 and J5 results to the market in due course.

A targeted regional exploration program is now underway at the Troilus Project. Focused on extension and identification of mineralization to the Northeast and Southwest of the existing resource. Structural and geophysical studies are being combined with regional mapping to outline potential drill targets to be included within our 2019 exploration drill program.

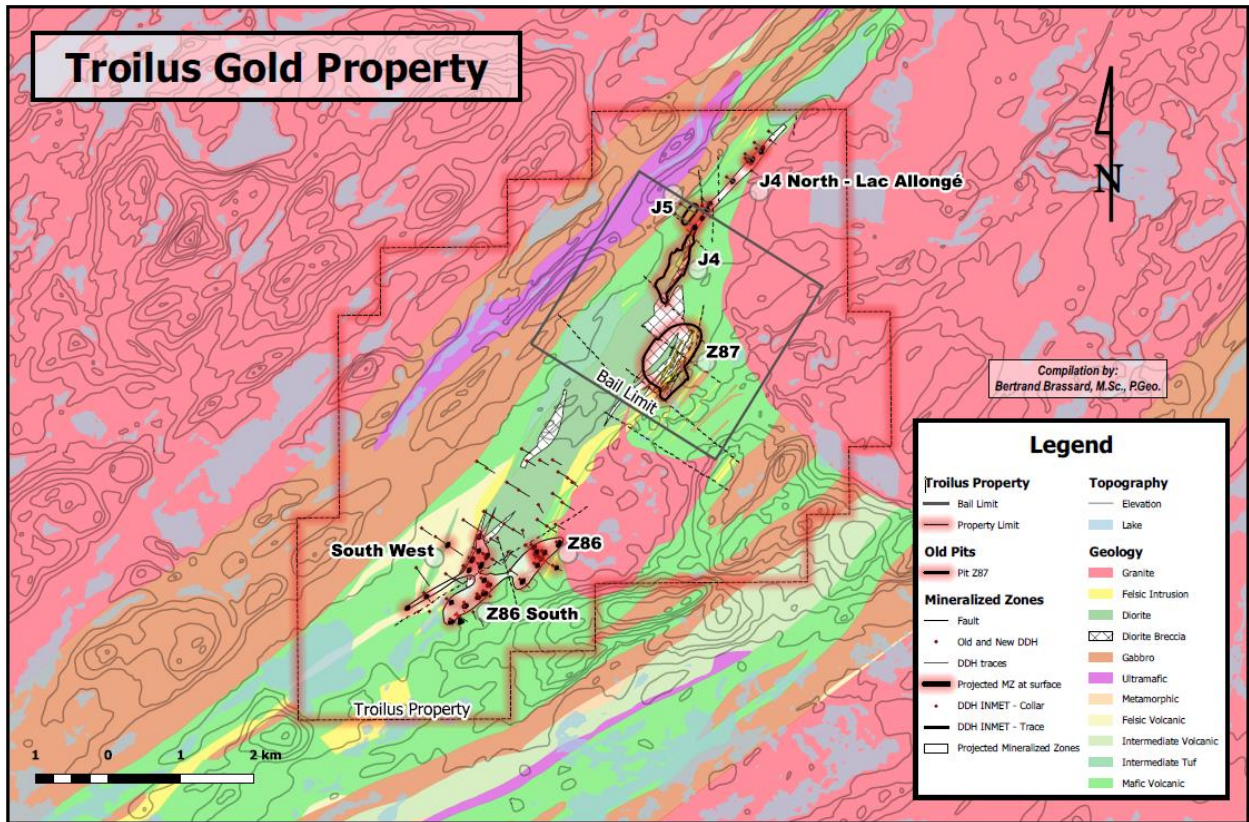


Figure 1: Geologic plan map showing location of main targets across Troilus package



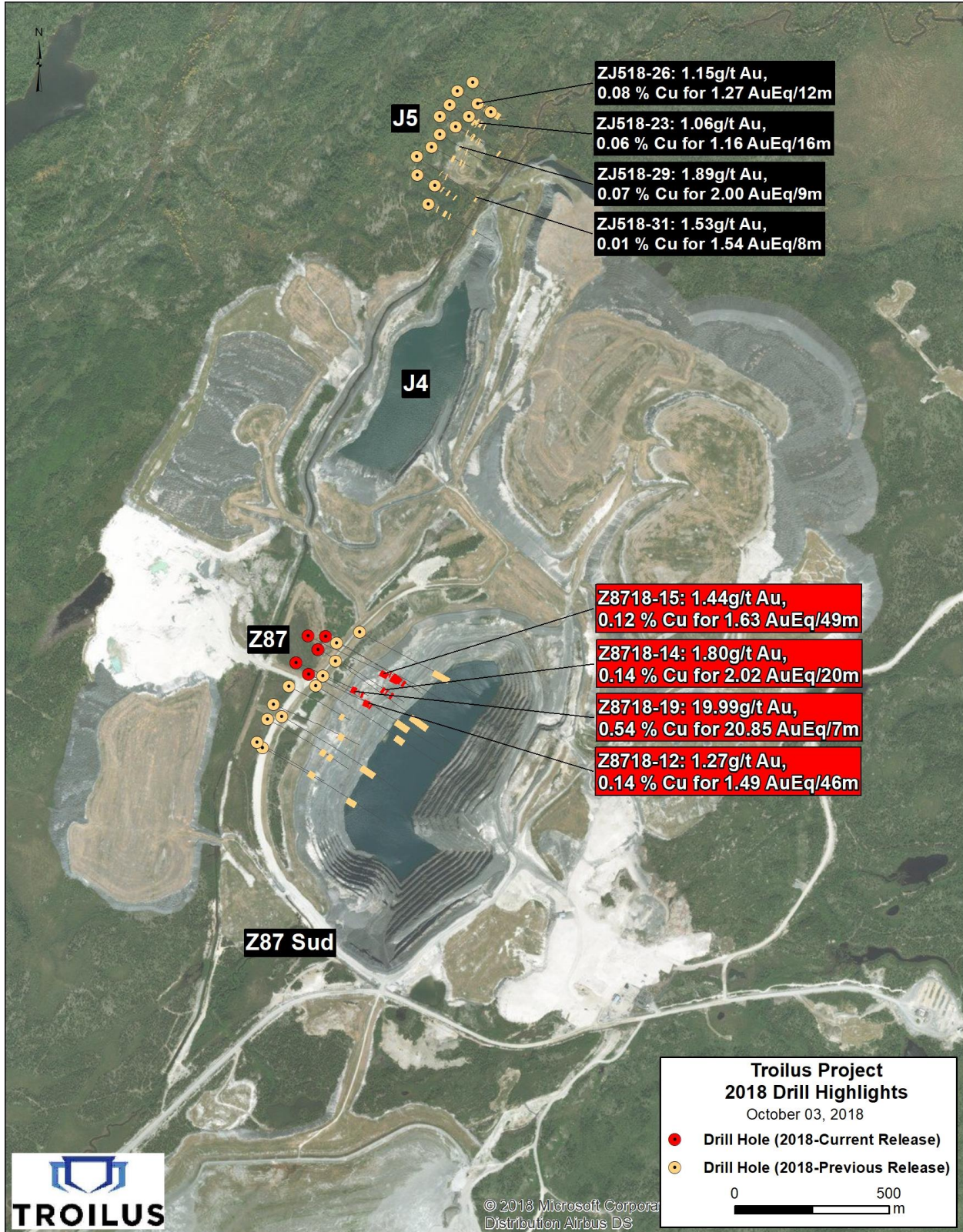
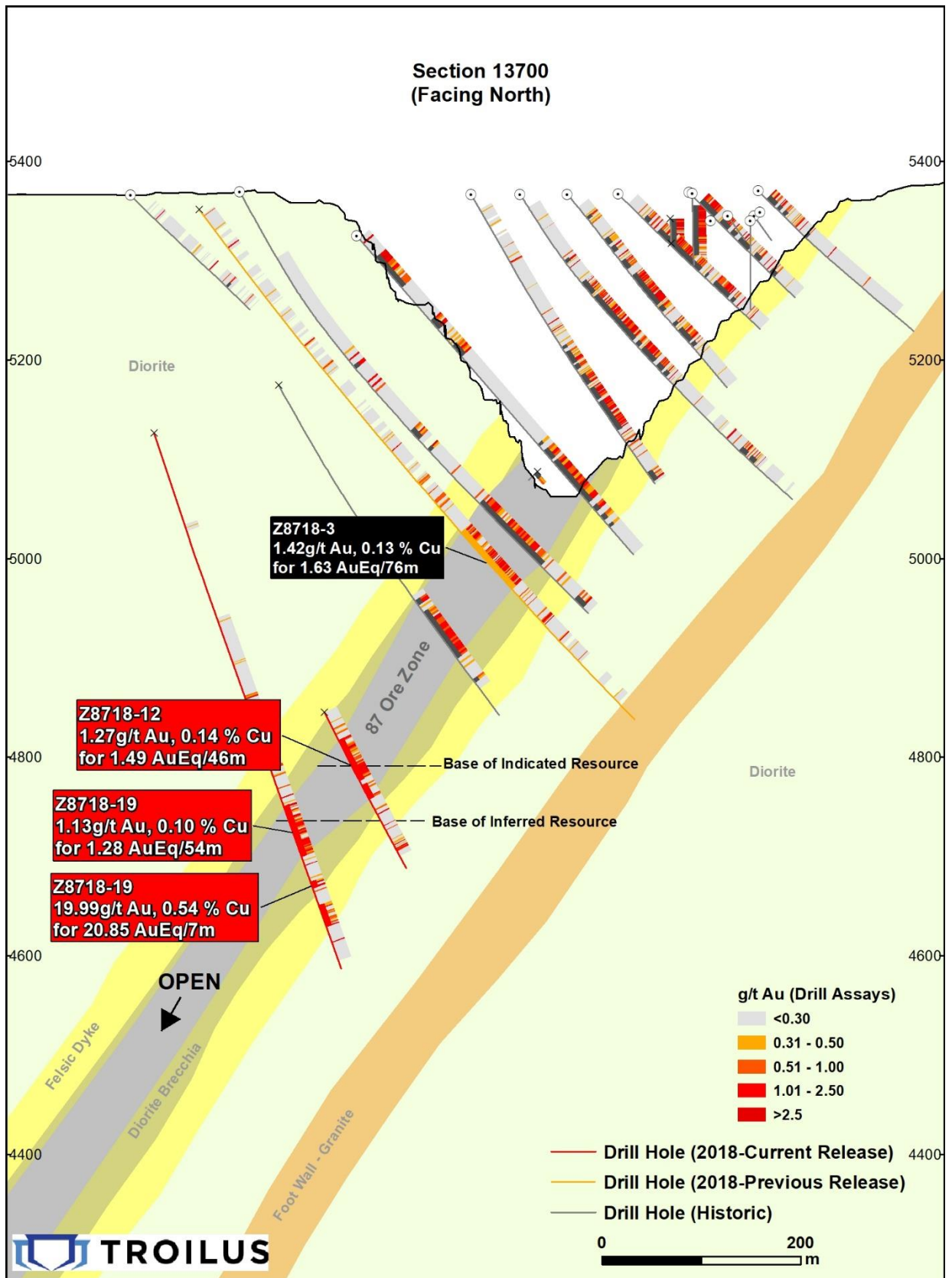
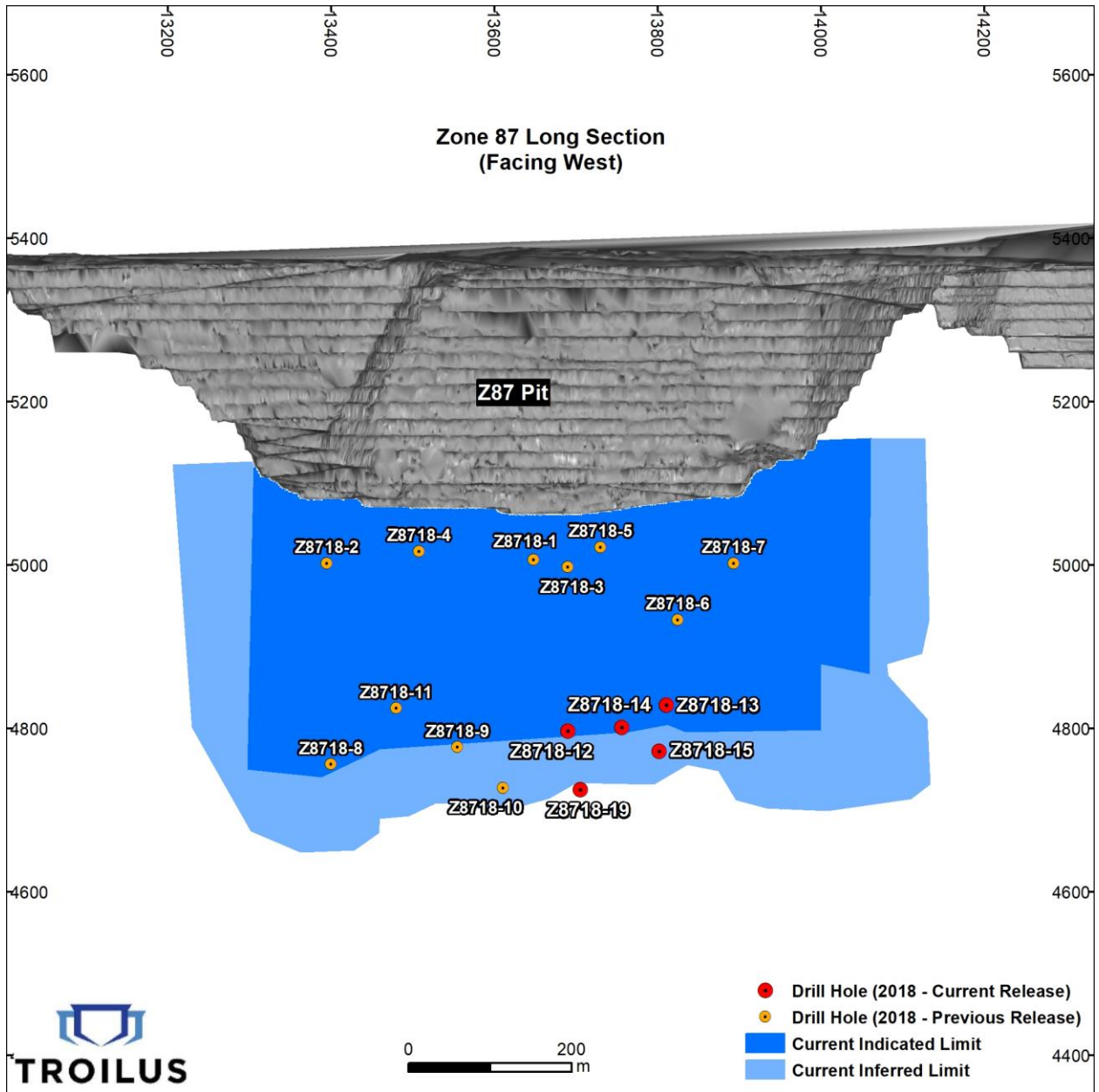


Figure 2: Property plan map showing location of significant drill results





**Figure 3:** Cross Section showing drill results and typical geology of Z87 at Troilus Gold Project



**Figure 4: Z87 longitudinal section looking grid West**

## Z87

		From	To	Length	Au	Cu	AuEq
TLG-Z8718-012		589	635	46	1.27	0.14	1.49
	incl	599	602	2	5.66	0.23	6.02
	incl	619	631	11	2.25	0.38	2.84
	and	640	656	16	0.46	0.12	0.65
TLG-Z8718-013		552	560	8	0.93	0.18	1.21
	incl	557	560	3	1.25	0.30	1.73
	and	573	635	62	0.86	0.09	1.00
	incl	575	577	2	1.79	0.06	1.88
	incl	582	583	1	3.44	0.75	4.63
	incl	589	592	3	1.64	0.07	1.75
	incl	612	618	6	1.51	0.09	1.65
	and	646	666	20	0.86	0.04	0.93
	incl	656	658	2	2.15	0.06	2.24
TLG-Z8718-014		609	629	20	1.80	0.14	2.02
	incl	611	612	1	3.02	0.08	3.14
	incl	616	622	6	2.13	0.29	2.58
	incl	620	622	2	3.63	0.33	4.16
	and	641	649	8	0.42	0.08	0.55
	incl	674	675	1	3.62	0.18	3.90
TLG-Z8718-015		633	682	49	1.44	0.12	1.63
	incl	636	641	5	2.47	0.43	3.15
	incl	647	648	1	4.20	0.02	4.23
	incl	663	670	7	3.21	0.08	3.34
	incl	664	668	4	4.70	0.07	4.81
	incl	674	681	7	1.45	0.15	1.69
	and	702	751	49	0.38	0.04	0.44
	incl	707	709	2	1.54	0.13	1.74
	incl	725	729	4	1.34	0.07	1.46
TLG-Z8718-019		648	702	54	1.13	0.10	1.28
	incl	648	650	2	2.34	0.05	2.43
	incl	660	662	2	2.97	0.04	3.03
	incl	668	672	4	1.15	0.09	1.29
	incl	675	680	5	1.52	0.16	1.77
	incl	679	680	1	3.48	0.51	4.28
	incl	686	694	8	2.61	0.16	2.86
	incl	693	694	1	8.87	0.57	9.78
	and	729	736	7	19.99	0.54	20.85
	and	729	736	7	2.32	0.54	3.18
	incl	734	736	2	67.69	1.59	70.21
	incl	734	736	2	5.84	1.59	8.36
	incl	735	736	1	133.70	2.83	138.18
	and	754	777	23	0.53	0.08	0.66

\*Metal grades uncut

\*\*AuEq based on \$1300/oz Au, \$3/lb Cu and 100% recovery. Au g/t + (Cu g/t \* Cu price (g)) / Au price (g)

## 36,000 Metre 2018 Drill Program

### Overview:

- 1) **Zone 87 (Z87):** Expand defined underground estimated mineral resource down dip and along strike below the historic producing Z87 open pit.
- 2) **Zone J4 (J4) & Zone J5 (J5):** Expand estimated mineral resource below historic producing J4 and J5 open pits to show potential near surface mineralization.
- 3) **Southwest Zone:** Based on historic drilling success, initiate near surface exploration 3.5 kilometre Southwest of Z87 open pit along the Troilus Diorite boundary (Figure 2)

### 1) Z87:

From 1996 to 2010, Z87 produced the majority of the over 2 million ounces of gold and 70,000 tonnes of copper produced at the Troilus Project. The Z87 pit was ultimately 350 metres deep and had a strike of approximately 900 metres. The Z87 zone is the focus of the current underground estimated mineral resource, representing over 1.6 million ounces of indicated and 360,000 ounces of inferred material (Figure 6).

Mineralization at the Troilus Project is hosted in breccias and amphibolite grade metamorphic rocks within a much broader, 4.5 kilometre by 400 metre, metamorphosed diorite, known as the Troilus Diorite. Fine-grained disseminated gold accounts for approximately 90% of mineralization at Troilus, primarily as native gold and electrum with grains as large as 20 microns. Chalcopyrite, Pyrite, and Pyrrhotite are broadly disseminated throughout the mineralized body, which are rarely associated with gold (<1-3%). Vein-hosted gold accounts for approximately 10% of mineralization which are responsible for high grade intercepts (>50gpt over 1 m) at Troilus.

The broad geology and style of mineralization at Z87 creates a large deposit area, nearly 1 kilometre along strike and 30-50 metres wide, which remains open both along strike and down dip. The 2018 drill program at Z87 was designed to:

- Expand and infill certain areas of Troilus' existing underground estimated mineral resource;
- Convert and upgrade inferred material along the flanks and down dip extension of underground estimated mineral resources to an indicated category; and
- Expand down dip estimated mineral resources and show potential for further expansion through focused infill and step out drilling.

### 2) J4 & J5:

J4 and J5, two smaller scale historic open pits located 200 metres and 1kilometres directly Northeast of Z87 are characterized by the same mineralization and geology as Z87; both remaining open at depth and along strike.

Management believes the inherited Troilus database suggests the potential for additional near surface mineralization at J4 and J5. The objective of the 2018 drill campaign, at J4 and J5, was to expand the pit

constrained and underground estimated mineral resource below these lesser historic pits, with the intent of recognizing material that could contribute to an early production scenario.

### 3) Southwest Zone

The Southwest Zone is located along the margin of the Troilus Diorite and surrounding volcanics, 3.5 kilometres Southwest of Z87 (Figure 5). Historically this area exhibited significant mineralization from drilling including intercepts as high as 36m @ 1.23g/t Au, and 18m @ 1.06g/t Au. Historic drilling in this area was limited, leaving the opportunity to explore, and potentially outline new mineralization at surface.

The Southwest Zone exemplifies near term, blue sky opportunity at Troilus, and is currently the focus of a significant, property wide exploration program. The Troilus Diorite remains underexplored and highly prospective.

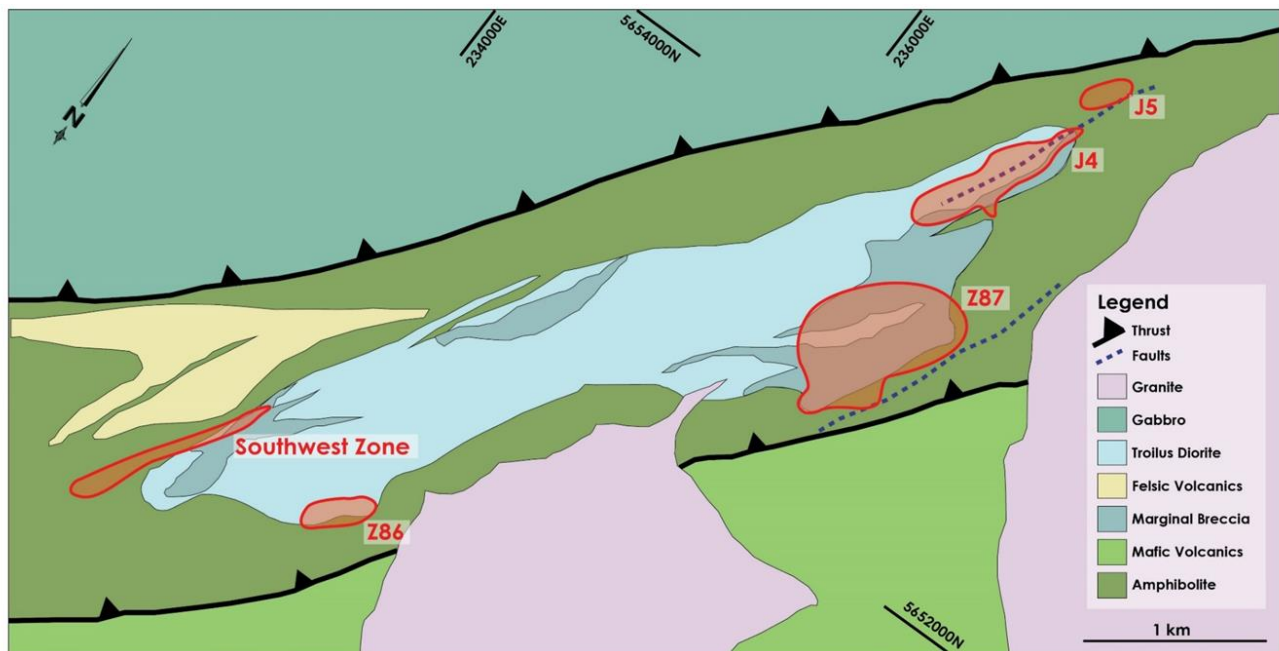


Figure 5: Troilus Project Geology and Target Map

	Zone	Tonnage (Mt)	Au (g/t)	Cu (%)	AuEq (g/t)	Contained Gold (000 oz)	Contained Copper (Mlb)	Contained AuEq (000 oz)
Indicated	87	29.6	1.48	0.157	1.72	1,403	102.2	1,635
	J4	-	-	-	-	-	-	-
	J5	-	-	-	-	-	-	-
<b>Total Indicated</b>		<b>29.6</b>	<b>1.48</b>	<b>0.157</b>	<b>1.72</b>	<b>1,403</b>	<b>102.2</b>	<b>1,635</b>
Inferred	87	7.9	1.19	0.138	1.41	305	24.2	360
	J4	4.4	1.15	0.040	1.21	163	3.9	172
	J5	0.3	0.98	0.045	1.05	10	0.3	11
<b>Total Interred</b>		<b>12.6</b>	<b>1.18</b>	<b>0.102</b>	<b>1.33</b>	<b>478</b>	<b>28.4</b>	<b>543</b>

Figure 6: Troilus Estimated Underground Resource



Notes:

1. CIM definitions were followed for Mineral Resources.
2. Mineral Resources were estimated at a cut-off grade of 0.8 g/t Au.
3. Mineral Resources were estimated using long-term metal prices of US\$1,500 per ounce gold and US\$3.50 per pound copper; and an exchange rate of US\$1.00 = C\$1.1.
4.  $AuEq = (34.59 \times Au \text{ grade} + 54.02 \times Cu \text{ grade}) / 34.59$ .
5. A recovery of 83% was used for gold and 92% for copper.
6. Numbers may not add due to rounding.
7. Mineral Resources which are not Mineral Reserves do not have demonstrated economic viability. The estimate of Mineral Resources may be materially affected by environmental, permitting, legal, title, taxation, sociopolitical, marketing, or other relevant issues.
8. Drilling has been done to intercept ore zone at true width. The difference between true and drill width is too small to impact intervals stated.

### **Quality Control**

During the Zone 87 drill program, one metre assay samples are taken from NQ core and sawed in half. One-half is sent for assaying at AGAT Laboratory, a certified commercial laboratory, and the other half is retained for results, cross checks, and future reference. A strict QA/QC program is applied to all samples; which include insertion of one certified mineralized standard and one blank sample in each batch of 25 samples. The gold analyses were by fire-assay on 30 grams of pulp with an atomic absorption finish. Repeats were carried out by fire-assay with a gravimetric finish on each sample containing 3.5 g/t Au or more.

### **About Troilus Gold Corp.**

Troilus is a Toronto-based, Quebec focused, advanced stage exploration and early-development company focused on the mineral expansion and potential mine re-start of the former gold and copper Troilus mine. The 4,700-hectare Troilus property is located northeast of the Val-d'Or district, within the Frotêt-Evans Greenstone Belt in Quebec, Canada. From 1997 to 2010, Inmet Mining Corporation operated the Troilus project as an open-pit mine, producing more than 2,000,000 ounces of gold and nearly 70,000 tonnes of copper.

### **Qualified Person**

The technical and scientific information in this press release has been reviewed and approved by Bruno Perron, P.Eng., Senior Technical Manager, who is a Qualified Person as defined by National Instrument 43-101. Mr. Perron is an employee of Troilus and is not independent of the Company under National Instrument 43-101

**For more information:**

Spyros Karellas  
Communications Manager  
+1 (416) 433-5696  
[skarellas@troilusgold.com](mailto:skarellas@troilusgold.com)

**Cautionary statements**

*Mineral Resources are not Mineral Reserves and do not have demonstrated economic viability. There is no certainty that all or any part of Mineral Resources will be converted to Mineral Reserves. Inferred Mineral Resources have a lower level of confidence that that applied to an Indicated Mineral Resource and must not be converted to a Mineral Reserve. Quantity and grades are estimates and are rounded to reflect the fact that the Mineral Resource Estimate is an approximation. For more information with respect to the key assumptions, parameters and risks associated with the mineral resource estimates discussed herein, see the Company's technical report entitled "Technical Report on the Troilus Gold Copper Mine Mineral Resource Estimate, Quebec, Canada" dated November 20, 2017 (the "Technical Report") available under the Company's profile at [www.sedar.com](http://www.sedar.com).*

*This press release contains "forward-looking information" within the meaning of applicable Canadian securities legislation. Forward-looking information includes, but is not limited to, statements regarding , the impact of drill results and mineral resources estimate on the Company, the projected economics of the project, and the Company's understanding of the project; statements with respect to the development potential and timetable of the project; the estimation of mineral resources; realization of mineral resource estimates; the timing and amount of estimated future exploration; costs of future activities; capital and operating expenditures; success of exploration activities; government regulation of mining operations; and environmental risks and the receipt of any required regulatory approvals. Generally, forward-looking information can be identified by the use of forward-looking terminology such as "plans", "expects" or "does not expect", "is expected", "budget", "scheduled", "estimates", "forecasts", "intends", "anticipates" or "does not anticipate", or "believes", or variations of such words and phrases or statements that certain actions, events or results "may", "could", "would", "might" or "will be taken", "occur" or "be achieved". Forward-looking information is subject to known and unknown risks, uncertainties and other factors that may cause the actual results, level of activity, performance or achievements of Troilus to be materially different from those expressed or implied by such forward-looking information, including but not limited to: there being no assurance that the exploration program will result in expanded mineral resources; ;risks and uncertainties inherent to mineral resource estimates; receipt of necessary approvals; general business, economic, competitive, political and social uncertainties; future prices of mineral prices; accidents, labour disputes and shortages; environmental and other risks of the mining industry, including without limitation, risks and uncertainties discussed in the Technical Report and other continuous disclosure documents of the Company available under the Company's profile at [www.sedar.com](http://www.sedar.com) . Although Troilus has attempted to identify important factors that could cause actual results to differ materially from those contained in forward-looking information, there may be other factors that cause results not to be as anticipated, estimated or intended. There can be no assurance that such information will prove to be accurate, as actual results and future events could differ materially from those anticipated in such statements. Accordingly, readers should not place undue reliance on forward-looking information. Pitchblack and Troilus do not undertake to update any forward-looking information, except in accordance with applicable securities laws.*

*Neither TSX Venture Exchange nor its Regulation Services Provider (as that term is defined in the policies of the TSX Venture Exchange) accepts responsibility for the adequacy or accuracy of this release.*